

J.P. Harrell
no & Harrell
S. Federal Highway, Suite 200
Pierce, FL 34950-5178
464-1032 Ext. 1010

**NOTICE OF ESTABLISHMENT OF THE TRADITION COMMUNITY
DEVELOPMENT DISTRICT No. 7**

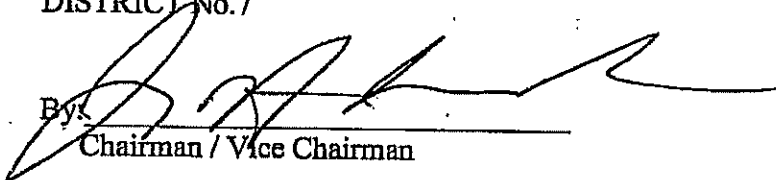
This Notice is recorded pursuant to the requirements of Section 190.0485, Florida Statutes. The Tradition Community Development District No. 7 was established by Ordinance No. 06-99, enacted September 25, 2006, by the City Council of the City of Port St. Lucie, Florida. The legal description of Tradition Community Development District No. 7 is attached as Exhibit A and is incorporated into this Notice.

THE TRADITION COMMUNITY DEVELOPMENT DISTRICT No. 7 MAY IMPOSE AND LEVY TAXES OR ASSESSMENTS, OR BOTH TAXES AND ASSESSMENTS, ON THIS PROPERTY. THESE TAXES AND ASSESSMENTS PAY FOR THE CONSTRUCTION, OPERATION, AND MAINTENANCE COSTS OF CERTAIN PUBLIC FACILITIES AND SERVICES OF THE DISTRICT AND ARE SET ANNUALLY BY THE GOVERNING BOARD OF THE DISTRICT. THESE TAXES AND ASSESSMENTS ARE IN ADDITION TO COUNTY AND OTHER LOCAL GOVERNMENTAL TAXES AND ASSESSMENTS AND ALL OTHER TAXES AND ASSESSMENTS AS PROVIDED FOR BY LAW.

Dated this 23^d day of Oct., 2006.

BOARD OF SUPERVISORS TRADITION
COMMUNITY DEVELOPMENT
DISTRICT No. 7


Secretary / Assistant Secretary

By: 
Chairman / Vice Chairman

Approved as to form and legal sufficiency:


District Counsel

EDWIN M. FRY, Jr., CLERK OF THE CIRCUIT COURT
SAINT LUCIE COUNTY
FILE # 2949955 10/24/2006 at 11:40 AM
OR BOOK 2685 PAGE 706 - 713 Doc Type: NOT
RECORDING: \$69.50

STATE OF FLORIDA
COUNTY OF ST. LUCIE

The foregoing instrument was acknowledged before me this 23rd day of Oct, 2006,
by James H. Anderson, Chairman of the Tradition Community Development
District No. 7. He is personally known to me, or has produced
_____ as identification and did not take an oath.

[Notary Seal]



Daniel B. Harrell
MY COMMISSION # DD186968 EXPIRES
February 24, 2007
BONDED THRU TROY FARM INSURANCE, INC.



Notary Public State of Florida

Print Name DANIEL B. HARRELL

My commission expires: Feb. 24, 2007

STATE OF FLORIDA
COUNTY OF ST. LUCIE

The foregoing instrument was acknowledged before me this 23rd day of Oct, 2006,
by Henry H. Fishkind, as Secretary of the Tradition Community Development
District No. 7. He is personally known to me, or has produced
_____ as identification and did not take an oath.

[Notary Seal]



Daniel B. Harrell
MY COMMISSION # DD186968 EXPIRES
February 24, 2007
BONDED THRU TROY FARM INSURANCE, INC.



Notary Public State of Florida

Print Name DANIEL B. HARRELL

My commission expires: Feb. 24, 2007

EXHIBIT A

LEGAL DESCRIPTION



Lawson, Noble & Webb, Inc.

ENGINEERS • PLANNERS • SURVEYORS

590 NW Peacock Blvd, Suite 9, Port St. Lucie, FL 34986
(772) 878-1700 • fax: (772) 878-1802 • Web: www.lnw-inc.com

West Palm Beach • Port St. Lucie • Orlando • Vero Beach
EB 3432 / LB 6874

DESCRIPTION TO ACCOMPANY SKETCH

DESCRIPTION: REVISED C.D.D. NO. 7 (TRADITION) A PARCEL OF LAND LYING IN SECTIONS 5, 6, 7, 8 AND 17, TOWNSHIP 37 SOUTH, RANGE 39 EAST, ST. LUCIE COUNTY, FLORIDA AND BEING MORE PARTICULARLY DESCRIBED AS FOLLOWS:

COMMENCE AT THE MOST SOUTHERLY SOUTHWEST CORNER OF THE PLAT OF TRADITION PLAT NO. 5, RECORDED IN PLAT BOOK 42, PAGES 4, 4A THRU 4I, PUBLIC RECORDS OF SAID ST. LUCIE COUNTY, FLORIDA; THENCE SOUTH 89°57'05" WEST AS A BASIS OF BEARINGS ALONG THE SOUTH LINE OF SAID TRADITION PLAT NO. 5, A DISTANCE OF 2338.72 FEET TO THE SOUTHWEST CORNER OF SAID TRADITION PLAT NO. 5; THENCE SOUTH 86°33'28" WEST DEPARTING SAID SOUTH LINE, A DISTANCE OF 2196.18 FEET TO A POINT OF INTERSECTION WITH THE SOUTHERLY RIGHT-OF-WAY LINE OF PROPOSED TRADITION PARKWAY AND TO THE POINT OF BEGINNING; THENCE TRAVERSING THE SOUTHERLY AND SOUTHWESTERLY SAID PROPOSED RIGHT-OF-WAY LINE BY THE FOLLOWING TWELVE (12) COURSES;

SOUTH 89°57'05" WEST, A DISTANCE OF 323.61 FEET TO A POINT OF CURVATURE WITH A CURVE CONCAVE TO THE NORTHEAST AND HAVING A RADIUS OF 1595.00 FEET;

WESTERLY, NORTHWESTERLY AND NORTHERLY ALONG THE ARC OF SAID CURVE, THRU A CENTRAL ANGLE OF 90°02'55", AN ARC DISTANCE OF 2506.78 FEET TO A POINT OF TANGENCY WITH A LINE;

NORTH 00°00'00" EAST ALONG SAID LINE, A DISTANCE OF 182.47 FEET TO A POINT OF CURVATURE WITH A CURVE CONCAVE TO THE WEST AND HAVING A RADIUS OF 1465.00 FEET;

NORTHERLY ALONG THE ARC OF SAID CURVE, THRU A CENTRAL ANGLE OF 09°15'29", AN ARC DISTANCE OF 236.72 FEET TO A POINT OF COMPOUND CURVATURE WITH A CURVE CONCAVE TO THE SOUTHWEST AND HAVING A RADIUS OF 50.00 FEET;

NORTHWESTERLY ALONG THE ARC OF SAID CURVE, THRU A CENTRAL ANGLE OF 53°02'27", AN ARC DISTANCE OF 46.29 FEET TO A POINT OF REVERSE CURVATURE WITH A CURVE CONCAVE TO THE NORTHEAST AND HAVING A RADIUS OF 130.00 FEET;

NORTHWESTERLY, NORTHERLY AND NORTHEASTERLY ALONG THE ARC OF SAID CURVE, THRU A CENTRAL ANGLE OF 95°17'35", AN ARC DISTANCE OF 216.21 FEET TO A POINT OF REVERSE CURVATURE WITH A CURVE CONCAVE TO THE NORTHWEST AND HAVING A RADIUS OF 50.00 FEET;

NORTHEASTERLY, NORTHERLY AND NORTHWESTERLY ALONG THE ARC OF SAID CURVE, THRU A CENTRAL ANGLE OF 53°02'27", AN ARC DISTANCE OF 46.29 FEET TO A POINT OF COMPOUND CURVATURE WITH A CURVE CONCAVE TO THE SOUTHWEST AND HAVING A RADIUS OF 1465.00 FEET;

NORTHWESTERLY ALONG THE ARC OF SAID CURVE, THRU A CENTRAL ANGLE OF 39°36'15", AN ARC DISTANCE OF 1012.84 FEET TO A POINT OF COMPOUND CURVATURE WITH A CURVA CONCAVE TO THE SOUTHWEST AND HAVING A RADIUS OF 58.00 FEET;

NORTHWESTERLY, WESTERLY AND SOUTHWESTERLY ALONG THE ARC OF SAID CURVE, THRU A CENTRAL ANGLE OF 51°58'20", AN ARC DISTANCE OF 52.61 FEET TO A POINT OF REVERSE CURVATURE WITH A CURVE CONCAVE TO THE NORTHEAST AND HAVING A RADIUS OF 130.00 FEET;

SOUTHWESTERLY, WESTERLY AND NORTHWESTERLY ALONG THE ARC OF SAID CURVE, THRU A CENTRAL ANGLE OF 90°52'15", AN ARC DISTANCE OF 210.72 FEET TO A POINT OF REVERSE CURVATURE WITH A CURVE CONCAVE TO THE SOUTHWEST AND HAVING A RADIUS OF 58.00 FEET;

NORTHWESTERLY ALONG THE ARC OF SAID CURVE, THRU A CENTRAL ANGLE OF 51°21'28", AN ARC DISTANCE OF 51.99 FEET TO A POINT OF TANGENCY WITH A LINE;

NORTH 70°06'35" WEST ALONG SAID LINE, A DISTANCE OF 1594.71 FEET;

THENCE NORTH 19°53'24" EAST DEPARTING SAID PROPOSED RIGHT-OF-WAY LINE, A DISTANCE OF 130.00 FEET TO A POINT OF RADIAL INTERSECTION WITH A CURVE CONCAVE TO THE NORTHEAST AND HAVING A RADIUS OF 58.00 FEET, THENCE NORTHWESTERLY ALONG THE ARC OF SAID CURVE, THRU A CENTRAL ANGLE OF 49°08'12", AN ARC DISTANCE OF 49.74 FEET TO A POINT OF REVERSE CURVATURE WITH A CURVE CONCAVE TO THE SOUTHWEST AND HAVING A RADIUS OF 130.00 FEET; THENCE NORTHWESTERLY ALONG THE ARC OF SAID CURVE, THRU A CENTRAL ANGLE OF 05°09'32", AN ARC DISTANCE OF 11.70 FEET TO A POINT OF REVERSE CURVATURE WITH A CURVE CONCAVE TO THE NORTHEAST AND HAVING A RADIUS OF 58.00 FEET; THENCE NORTHWESTERLY, NORTHERLY AND NORTHEASTERLY ALONG THE ARC OF SAID CURVE, THRU A CENTRAL ANGLE OF 44°58'21", AN ARC DISTANCE OF 45.53 FEET TO A POINT OF TANGENCY WITH A LINE; THENCE NORTH 18°50'26" EAST ALONG SAID LINE, A DISTANCE OF 653.78 FEET TO A POINT OF CURVATURE WITH A CURVE CONCAVE TO THE NORTHWEST AND HAVING A RADIUS OF 1590.00 FEET; THENCE NORTHEASTERLY ALONG THE ARC OF SAID CURVE, THRU A CENTRAL ANGLE OF 18°08'36", AN ARC DISTANCE OF 503.49 FEET TO A POINT OF TANGENCY WITH A LINE; THENCE NORTH 00°41'50" EAST ALONG SAID LINE, A DISTANCE OF 1015.33 FEET TO A POINT OF CURVATURE WITH A CURVE CONCAVE TO THE SOUTHWEST AND HAVING A RADIUS OF 1600.00 FEET; THENCE NORTHERLY AND NORTHWESTERLY ALONG THE ARC OF SAID CURVE, THRU A CENTRAL ANGLE OF 33°31'35", AN ARC DISTANCE OF 936.23 FEET TO A POINT OF REVERSE CURVATURE WITH A CURVE CONCAVE TO THE NORTHEAST AND HAVING A RADIUS OF 1690.00 FEET; THENCE NORTHWESTERLY

THENCE NORTHWESTERLY ALONG THE ARC OF SAID CURVE, THRU A CENTRAL ANGLE OF 33°31'35", AN ARC DISTANCE OF 936.23 FEET TO A POINT OF REVERSE CURVATURE WITH A CURVE CONCAVE TO THE NORTHEAST AND HAVING A RADIUS OF 1690.00 FEET; THENCE NORTHWESTERLY

NOTE: THIS IS NOT A SKETCH OF SURVEY, but only a graphic depiction of the description shown hereon. There has been no field work, viewing of object property or monuments set in connection with the preparation of the information shown hereon.

NOTE: Lands shown hereon were not abstracted for right-of-way and/or easements of record.

JULIAN D. MORRIS, PROFESSIONAL SURVEYOR AND MAPPER, FLORIDA REGISTRATION NO. 4731
DATE OF SIGNATURE: 1-11-06

REVISE BOUNDARY 12-28-05 DDB
REVISE BOUNDARY 12-16-05 JDM
REVISE BOUNDARY 11-14-05 GRB

PL:\500-599\8589\OVER\CDD\8589CDD7-1-NEW.dwg 12/16/2005 3:15:55 PM EST

SHEETS 3, 4 & 5 OF 5 FOR SKETCH

SHEET 1 OF 5

No. B589 DRAWN: DDB CHECKED: GRB DESIGN: ARCADIS DATE: 2-14-05



Lawson, Noble & Webb, Inc.

ENGINEERS • PLANNERS • SURVEYORS

590 NW Peacock Blvd, Suite 9, Port St. Lucie, FL 34986

(772) 878-1700 • fax: (772) 878-1802 • Web: www.lnw-inc.com

West Palm Beach • Port St. Lucie • Orlando • Vero Beach

EB 3432 / LB 8874

DESCRIPTION TO ACCOMPANY SKETCH

LONG THE ARC OF SAID CURVE, THRU A CENTRAL ANGLE OF 30°36'03", AN ARC DISTANCE OF 902.60 FEET TO A POINT OF COMPOUND CURVATURE WITH A CURVE CONCAVE TO THE SOUTHEAST AND HAVING A RADIUS OF 58.00 FEET; THENCE NORTHERLY AND NORTHEASTERLY ALONG THE ARC OF SAID CURVE, THRU A CENTRAL ANGLE OF 48°13'54", AN ARC DISTANCE OF 48.80 FEET TO A POINT OF REVERSE CURVATURE WITH A CURVE CONCAVE TO THE NORTHWEST AND HAVING A RADIUS OF 130.00 FEET; THENCE NORTHEASTERLY ALONG THE ARC OF SAID CURVE, THRU A CENTRAL ANGLE OF 03°07'09", AN ARC DISTANCE OF 7.08 FEET TO A POINT OF REVERSE CURVATURE WITH A CURVE CONCAVE TO THE SOUTHEAST AND HAVING A RADIUS OF 58.00 FEET; THENCE NORTHEASTERLY AND NORTHEASTERLY ALONG THE ARC OF SAID CURVE, THRU A CENTRAL ANGLE OF 49°08'12", AN ARC DISTANCE OF 49.74 FEET TO A POINT OF TANGENCY WITH A LINE; THENCE SOUTH 89°58'45" EAST ALONG SAID LINE, A DISTANCE OF 808.61 FEET TO A POINT OF INTERSECTION WITH THE NORTH LINE OF THE O.L. PEACOCK CANAL AS DESCRIBED IN OFFICAL RECORDS BOOK 675, PAGE 1842 AS (EXHIBIT "A") AND OFFICAL RECORDS BOOK 675, PAGE 1982 AS (EXHIBIT "B"); THENCE NORTH 74°05'51" EAST ALONG SAID NORTH LINE A DISTANCE OF 714.77 FEET; THENCE NORTH 74°35'02" EAST, A DISTANCE OF 620.60 FEET; THENCE NORTH 34°54'59" WEST, A DISTANCE OF 16.17 FEET; THENCE NORTH 74°00'26" EAST, A DISTANCE OF 1645.59 FEET; THENCE NORTH 74°54'36" EAST, A DISTANCE OF 978.01 FEET TO A POINT OF NON RADIAL INTERSECTION WITH A CURVE CONCAVE TO THE SOUTH AND HAVING A RADIUS OF 1550.00 FEET (THE RADIUS POINT OF WHICH BEARS SOUTH 07°07'36" EAST FROM THIS POINT); THENCE NORTHEASTERLY DEPARTING SAID NORTH LINE OF THE O.L. PEACOCK CANAL THRU A CENTRAL ANGLE OF 10°25'20", AN ARC DISTANCE OF 281.95 FEET TO A POINT OF NON RADIAL INTERSECTION WITH THE SOUTH LINE OF THE SAID O.L. PEACOCK CANAL; THENCE SOUTH 76°04'00" WEST, A DISTANCE OF 413.00 FEET; THENCE SOUTH 74°14'31" WEST, A DISTANCE OF 2525.45 FEET; THENCE SOUTH 13°32'09" WEST DEPARTING SAID SOUTH LINE A DISTANCE OF 51.89 FEET TO A POINT OF INTERSECTION WITH NORTH LINE OF GROVE 3; THENCE SOUTH 74°03'19" WEST ALONG SAID NORTH LINE A DISTANCE OF 2476.82 FEET TO THE NORTHEAST CORNER OF THAT PARCEL OF LAND DESCRIBED BY SPECIAL WARRANTY DEED, RECORDED IN OFFICAL RECORD BOOK 1958, PAGE 1412, PUBLIC RECORDS OF SAID ST. LUCIE COUNTY, FLORIDA; THENCE SOUTH 13°12'00" EAST ALONG SAID WEST LINE OF SPECIAL WARRANTY DEED, DEPARTING SAID NORTH LINE OF GROVE 3 A DISTANCE OF 4220.89 FEET TO A POINT OF INTERSECTION WITH THE SOUTHWEST CORNER OF SAID SPECIAL WARRANTY DEED; THENCE SOUTH 81°33'53" WEST DEPARTING SAID WEST LINE, A DISTANCE OF 821.46 FEET TO A POINT OF CURVATURE CONCAVE TO THE SOUTHEAST AND HAVING A RADIUS OF 1130.00 FEET; THENCE SOUTHWESTERLY ALONG THE ARC OF SAID CURVE, THRU A CENTRAL ANGLE OF 05°59'51", AN ARC DISTANCE OF 118.29 FEET TO POINT OF NON RADIAL INTERSECTION WITH A CURVE, CONCAVE TO THE NORTHEAST AND HAVING A RADIUS OF 780.00 FEET (THE RADIUS POINT OF WHICH BEARS NORTH 86°09'32" EAST FROM THIS POINT. THE RADIUS POINT OF SAID CURVE HAVING A RADIUS OF 1130.00 FEET BEARS SOUTH 14°25'58" EAST FROM THIS POINT); THENCE SOUTHEASTERLY ALONG THE ARC OF SAID CURVE, THRU A CENTRAL ANGLE OF 1°53'24", AN ARC DISTANCE OF 131.18 FEET TO A POINT OF TANGENCY WITH A LINE; THENCE SOUTH 13°43'52" EAST ALONG SAID LINE, A DISTANCE OF 43.25 FEET TO A POINT OF NON RADIAL INTERSECTION WITH A CURVE CONCAVE TO THE SOUTHWEST AND HAVING A RADIUS OF 110.00 FEET (THE RADIUS POINT OF WHICH BEARS SOUTH 29°52'50" EAST FROM THIS POINT); THENCE SOUTHEASTERLY ALONG THE ARC OF SAID CURVE, THRU A CENTRAL ANGLE OF 15°55'34", AN ARC DISTANCE OF 30.58 FEET TO A POINT OF REVERSE CURVATURE WITH A CURVE, CONCAVE TO THE NORTHEAST AND HAVING A RADIUS OF 50.00 FEET; THENCE SOUTHEASTERLY ALONG THE ARC OF SAID CURVE, THRU A CENTRAL ANGLE OF 52°09'52", AN ARC DISTANCE OF 45.52 FEET TO A POINT OF NON RADIAL INTERSECTION WITH A LINE (THE RADIUS POINT OF SAID CURVE BEARS NORTH 08°21'20" WEST FROM THIS POINT); THENCE SOUTH 04°21'48" EAST ALONG SAID LINE, A DISTANCE OF 105.55 FEET TO A POINT OF NON RADIAL INTERSECTION WITH A CURVE, CONCAVE TO THE SOUTHEAST AND HAVING A RADIUS OF 83.50 FEET (THE RADIUS POINT OF WHICH BEARS SOUTH 20°44'42" EAST FROM THIS POINT) THENCE SOUTHWESTERLY, NORTHERLY AND SOUTHEASTERLY ALONG THE ARC OF SAID CURVE, THRU A CENTRAL ANGLE OF 80°13'50", AN ARC DISTANCE OF 118.92 FEET TO A POINT OF REVERSE CURVATURE WITH A CURVE CONCAVE TO THE NORTHWEST AND HAVING A RADIUS OF 940.00 FEET; THENCE SOUTHEASTERLY, SOUTHERLY AND SOUTHWESTERLY ALONG THE ARC OF SAID CURVE, THRU A CENTRAL ANGLE OF 47°39'54", AN ARC DISTANCE OF 782.00 FEET TO A POINT OF TANGENCY WITH A LINE; THENCE SOUTH 38°41'22" WEST ALONG SAID LINE, A DISTANCE OF 107.22 FEET TO A POINT OF CURVATURE WITH A CURVE CONCAVE TO THE SOUTHEAST AND HAVING A RADIUS OF 870.00 FEET; THENCE SOUTHWESTERLY ALONG THE ARC OF SAID CURVE, THRU A CENTRAL ANGLE OF 04°58'00", AN ARC DISTANCE OF 75.42 FEET TO A POINT OF NON RADIAL INTERSECTION WITH A LINE (THE RADIUS POINT OF SAID CURVE BEARS SOUTH 58°16'40" EAST FROM THIS POINT); THENCE SOUTH 51°55'07" EAST ALONG SAID NON RADIAL LINE, A DISTANCE OF 701.92 FEET TO A POINT OF NON RADIAL INTERSECTION WITH A CURVE CONCAVE TO THE SOUTHEAST AND HAVING A RADIUS OF 440.00 FEET (THE RADIUS POINT OF SAID CURVE BEARS SOUTH 50°28" EAST FROM THIS POINT); THENCE NORTHEASTERLY ALONG THE ARC OF SAID CURVE, THRU A CENTRAL ANGLE OF 27°35'12", AN ARC DISTANCE OF 211.85 FEET TO A POINT OF TANGENCY WITH A LINE; THENCE NORTH 89°44'44" EAST ALONG SAID LINE, A DISTANCE OF 100.00 FEET; THENCE SOUTH 00°06'55" WEST, A DISTANCE OF 2619.94 FEET TO THE POINT OF BEGINNING.

CONTAINING 551.272 ACRES, MORE OR LESS

ISE BOUNDARY 12-28-05 DDB
 ISE BOUNDARY 12-16-05 JDM
 ISE BOUNDARY 11-14-05 GRB

P:\500-559\3589\QVER\CDD\3599CDD7-1-NCV.dwg 12/16/2005 3:55 PM EST

SHEETS 3, 4, & 5 OF 5 FOR SKETCH

SHEET 2 OF 5

No. B5B9	DRAWN: DDB	CHECKED: GRB	DESIGN: ARCADIS	DATE: 2-14-05
----------	------------	--------------	-----------------	---------------



Lawson, Noble & Webb, Inc.

ENGINEERS • PLANNERS • SURVEYORS

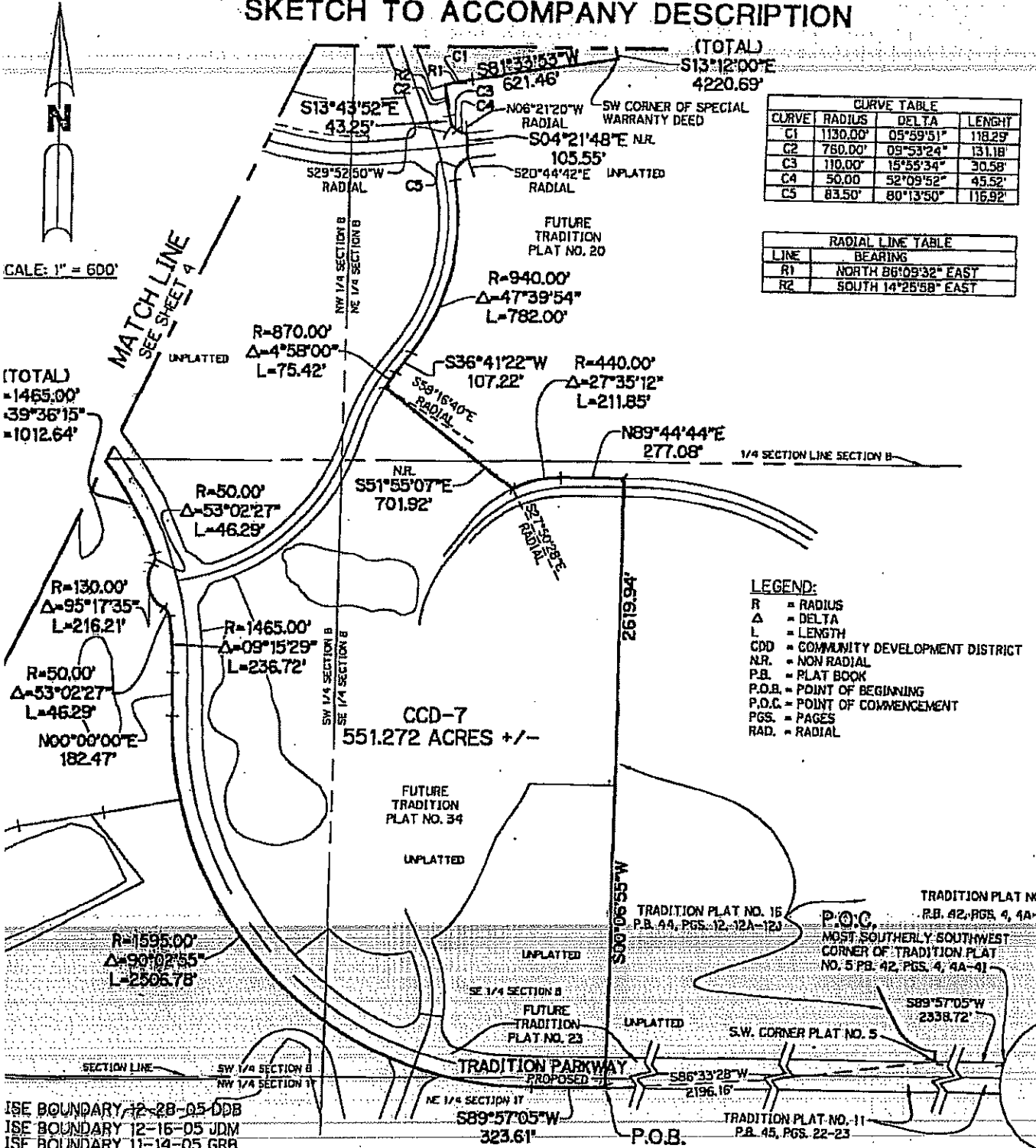
590 NW Peacock Blvd, Suite 9, Port St. Lucie, FL 34986

(772) 878-1700 • fax: (772) 878-1802 • Web: www.lnw-inc.com

West Palm Beach • Port St. Lucie • Orlando • Vero Beach

EB 3492 / LB 6674

SKETCH TO ACCOMPANY DESCRIPTION



CURVE TABLE			
CURVE	RADIUS	DELTA	LENGTH
C1	1130.00'	05°59'51"	118.29'
C2	760.00'	09°53'24"	131.18'
C3	110.00'	15°59'34"	30.58'
C4	50.00'	52°09'52"	45.52'
C5	83.50'	80°13'50"	116.92'

RADIAL LINE TABLE	
LINE	BEARING
R1	NORTH 86°09'32" EAST
R2	SOUTH 14°25'58" EAST

SCALE: 1" = 600'

ISE BOUNDARY 12-28-05 DDB
ISE BOUNDARY 12-16-05 JDM
ISE BOUNDARY 11-14-05 GRB

SHEETS 1 & 2 OF 5 FOR DESCRIPTION P:\500-599\B589\OVER\CDD\B589CDD7-1-REV.dwg 12/16/2005 3:15:55 PM EST SHEET 3 OF 5

No. 8589	DRAWN: DDB	CHECKED: GRB	DESIGN: ARCADIS	DATE: 8-23-04
----------	------------	--------------	-----------------	---------------



Lawson, Noble & Webb, Inc.

ENGINEERS • PLANNERS • SURVEYORS

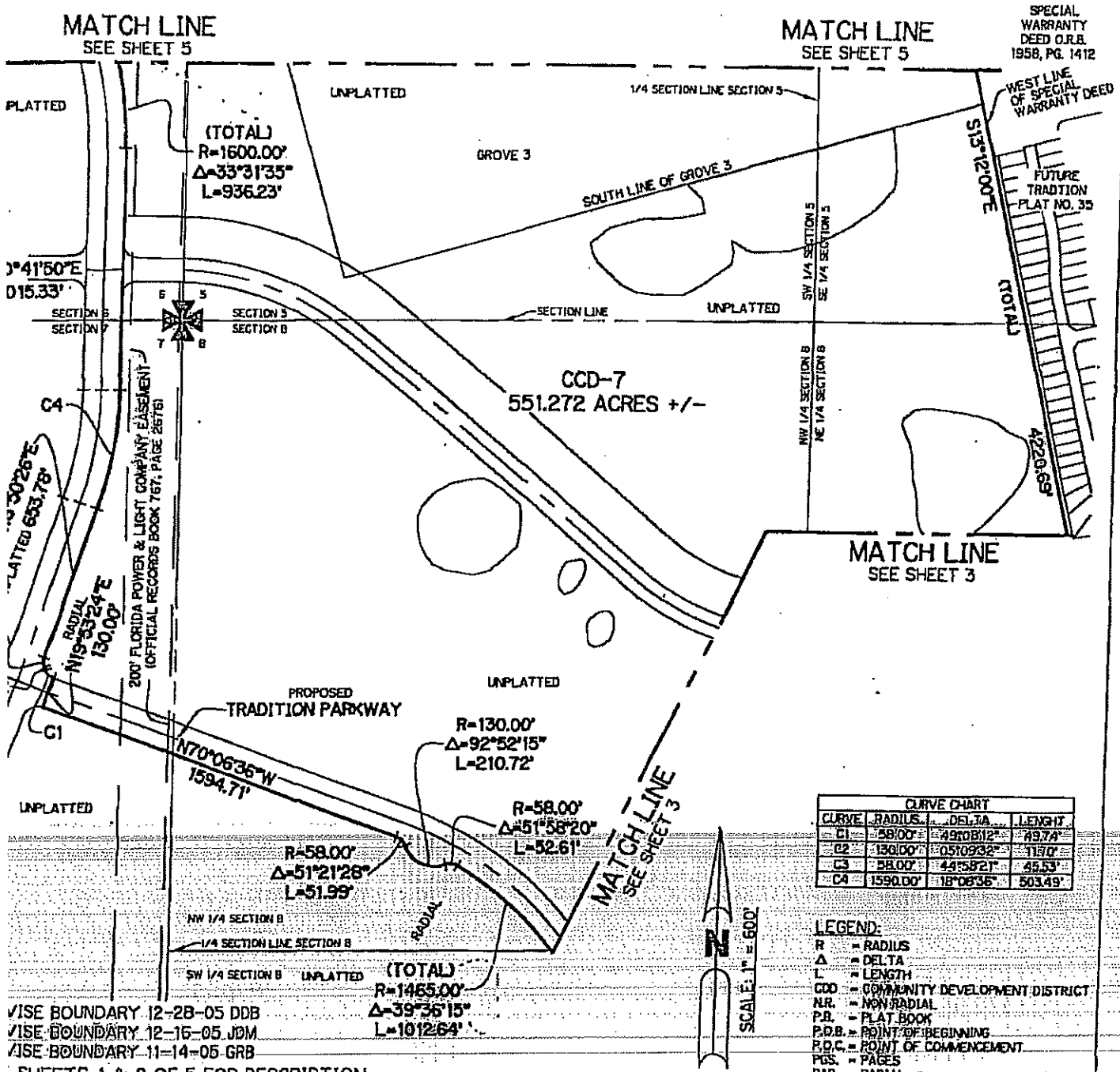
590 NW Peacock Blvd, Suite 9, Port St. Lucie, FL 34986

(772) 878-1700 • fax: (772) 878-1802 • Web: www.lnw-inc.com

West Palm Beach • Port St. Lucie • Orlando • Vero Beach

EB 3432 / LB 8874

SKETCH TO ACCOMPANY DESCRIPTION



CURVE CHART			
CURVE	RADIUS	DELTA	LENGTH
C1	58.00'	49°08'12"	49.74'
C2	130.00'	05°09'32"	11.07'
C3	58.00'	44°58'21"	45.53'
C4	1590.00'	18°06'36"	503.49'

- LEGEND:**
- R = RADIUS
 - Δ = DELTA
 - L = LENGTH
 - CCD = COMMUNITY DEVELOPMENT DISTRICT
 - NR = NON-RADIAL
 - P.B. = PLAT BOOK
 - P.O.B. = POINT OF BEGINNING
 - P.O.C. = POINT OF COMMENCEMENT
 - P.S. = PAGES
 - RAD. = RADIAL

SHEETS 1 & 2 OF 5 FOR DESCRIPTION



Lawson, Noble & Webb, Inc.

ENGINEERS • PLANNERS • SURVEYORS

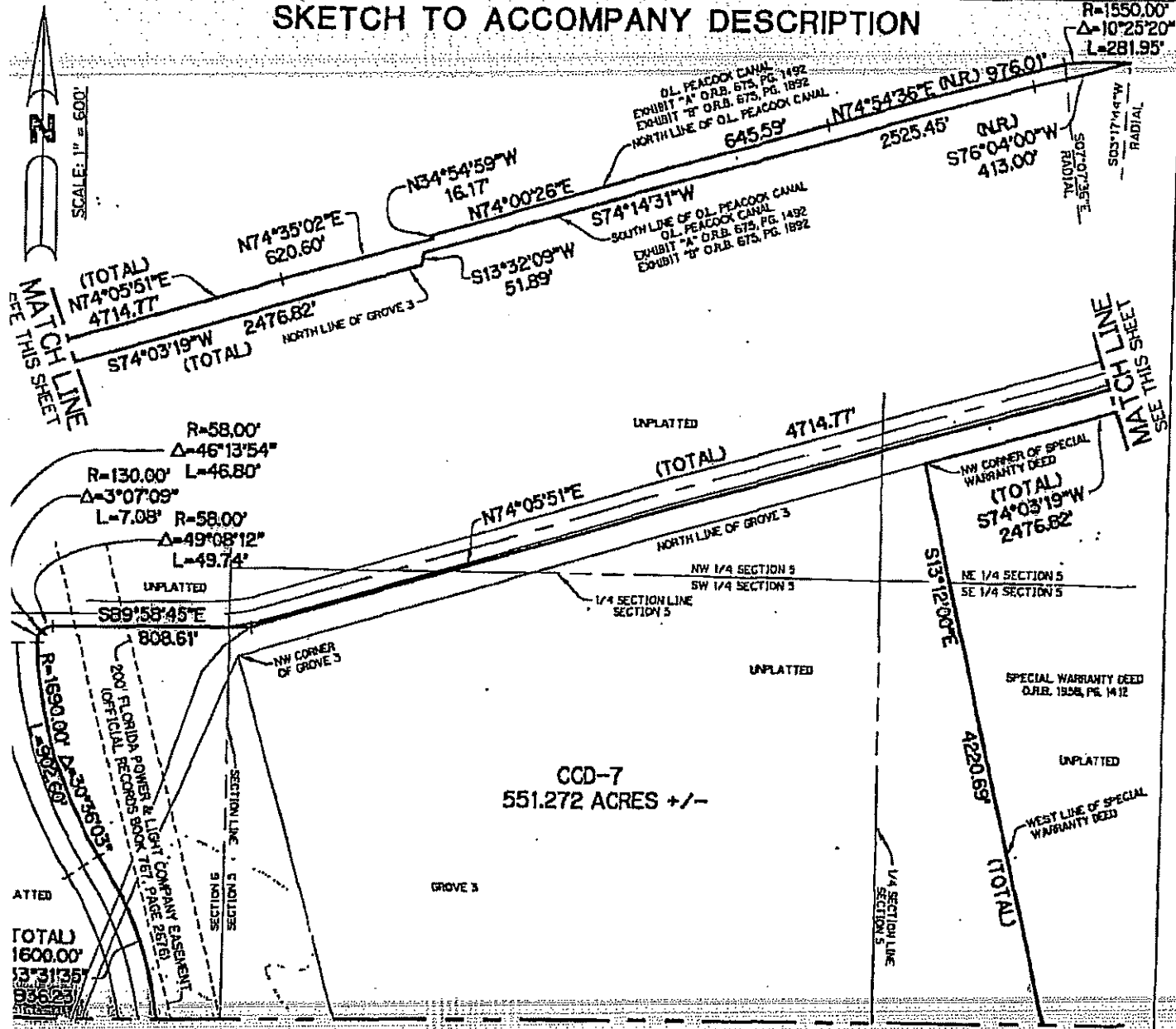
590 NW Peacock Blvd, Suite 9, Port St. Lucie, FL 34986

(772) 878-1700 • fax: (772) 878-1802 • Web: www.lnw-inc.com

West Palm Beach • Port St. Lucie • Orlando • Vero Beach

EB 8492 / LB 8874

SKETCH TO ACCOMPANY DESCRIPTION



SCALE: 1" = 500'
MATCH LINE SEE THIS SHEET

R=1550.00'
Δ=10°25'20"
L=281.95'
MATCH LINE SEE THIS SHEET

MATCH LINE SEE SHEET 4

MATCH LINE SEE SHEET 4

- LEGEND:**
- R = RADIUS
 - Δ = DELTA
 - L = LENGTH
 - CCD = COMMUNITY DEVELOPMENT DISTRICT
 - NR = NON RADIAL
 - ORB = OFFICIAL RECORDS BOOK
 - P.B. = PLAT BOOK
 - P.O.B. = POINT OF BEGINNING
 - P.O.C. = POINT OF COMMENCEMENT
 - P.G.S. = PAGES
 - RD. = RADIAL

ISE BOUNDARY 12-28-05 DDB
ISE BOUNDARY 12-16-05 JDM
ISE BOUNDARY 11-14-05 GRB

No. B589	DRAWN: DDB	CHECKED: GRB	DESIGN: ARCADIS	DATE: 2-14-05
----------	------------	--------------	-----------------	---------------